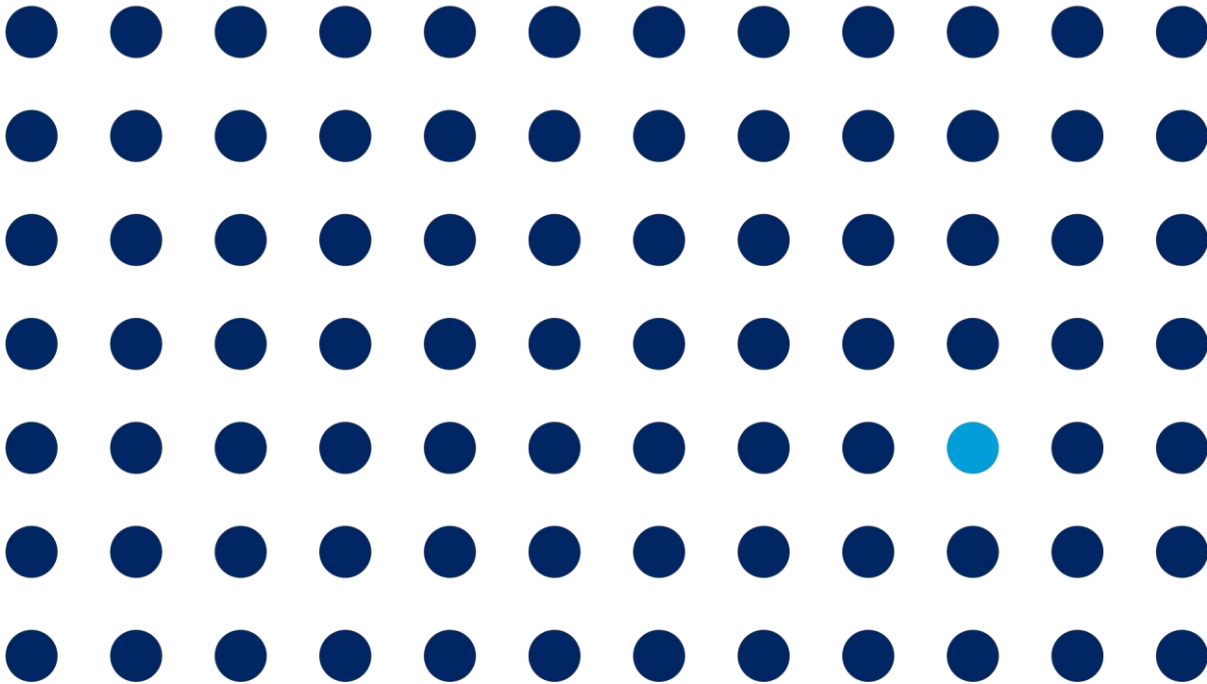


connected healthcare :
responsive and resilient

.....
SASB Disclosure - 2021

Service Sector: Healthcare Delivery

Reporting period: 1 Jan 2021 to 31 December 2021



Purpose

This document describes our non-financial performance using the SASB 2018 criteria for the Health Care sector (Health Care Delivery - Industry Standard – Version 2018-10)

About Medica

Medica is the market leader in the UK and Ireland for the provision of teleradiology services, providing outsourced interpretation and reporting of MRI (magnetic resonance imaging), CT (computerised tomography), ultrasound and plain film (x-ray) images. Medica also offers diabetic retinopathy screening in Ireland.

Medica contracts with the largest pool of consultant radiologists in the UK and Ireland, performing remote access teleradiology across its customer base of more than 100 NHS Trusts in the UK, the Irish HSE, private hospital and insurance groups, as well as diagnostic imaging companies. This enables the Company to offer a fast, responsive service. In addition, Medica operates in Australia and New Zealand through MedX, a 50:50 Joint Venture with Integral Diagnostics Limited Pty.

The Company currently offers two primary services to hospital radiology departments:

- NightHawk - urgent reporting service
- Elective - includes routine cross-sectional reporting on MRI and CT scans, and routine plain film reporting on x-ray images.

These services are underpinned by Medica's bespoke, secure IT platform that provides market-leading linkage between a hospital's Radiology Information System (RIS) and consultant radiologists who contract with the Company. Direct RIS access ensures that where the wider patient medical history is available, it can be reviewed by the consultant as part of every report.

Through its subsidiary, RadMD, in the United States, Medica also provides pharmaceutical and biotech clients and contract research organisations (CROs) with high quality, complex imaging services for international clinical trials. RadMD has gained vast experience in the space, having contributed to over 500 international clinical trials, in all phases of clinical research from proof of concept to phase III and with expertise in oncology, as well as a wider range of therapeutic areas including medical devices, neurology and cardiovascular.

For more information please visit: www.medicagroupplc.com

Accounting and Activity Metrics

Unless otherwise noted, this disclosure relates to our UK and Ireland operations for the reporting period of January 1, 2021 through December 31, 2021 and our US operations for the period of March 23, 2021, the date of acquisition of RadMD, through December 31, 2021.

Topic	Accounting Metric	SASB Code	Medica Disclosure 2021
Energy Management	(1) Total energy consumed, (2) percentage grid electricity, (3) percentage renewable	HC-DY-130a.1	<p>(1) – 150.3 GJ* (2) – 0% (3) – 100%**</p> <p>Data coverage: Medica's UK operations only</p> <p>Further data on our energy usage can be found in the ESG section on pages 19 to 21 of our 2021 Annual Report.</p> <p>https://medicagroupplc.com/mgp-ara21/</p> <p>*converted from kWh as reported in our 2021 annual report.</p> <p>**the grid electricity supplied to Medica's UK leased office is purchased directly by the landlord and charged back to Medica. The electricity company used for the leased building during 2021 only provided electricity from 100% renewable sources.</p>
Waste Management	Total amount of medical waste, percentage (a) incinerated, (b) recycled or treated, and (c) landfilled	HC-DY-150a.1	Not applicable – Medica provides telehealth services, and does not operate US based healthcare delivery facilities (hospitals).
	Total amount of: (1) hazardous and (2) non-hazardous pharmaceutical waste, percentage (a) incinerated, (b) recycled or treated, and (c) landfilled	HC-DY-150a.2	Not applicable – Medica provides telehealth services, and does not operate US based healthcare delivery facilities (hospitals).
Patient Privacy & Electronic Health Records	Percentage of patient records that are Electronic Health Records (EHR) that meet "meaningful use" requirements	HC-DY-230a.1	Not applicable – Medica provides telehealth services, and does not operate US based healthcare delivery facilities (hospitals).
	Description of policies and practices to secure customers' protected health information (PHI) records and other personally identifiable information (PII)	HC-DY-230a.2	<p>Please refer to our privacy and security overview document published on our website:</p> <p>www.medicagroupplc.com/privacy-security-overview</p>
	(1) Number of data breaches, (2) percentage involving (a) personally identifiable information (PII) only and (b) protected health information (PHI), (3) number of customers affected in each category, (a) PII only and (b) PHI	HC-DY-230a.3	Medica had no data breaches involving personal data or protected health information that were of a material nature, during FY2021.

Topic	Accounting Metric	SASB Code	Medica Disclosure 2021
	Total amount of monetary losses as a result of legal proceedings associated with data security and privacy	HC-DY-230a.4	Zero.
Access for Low-Income Patients	Discussion of strategy to manage the mix of patient insurance status	HC-DY-240a.1	Not applicable – Medica provides telehealth services, and does not operate US based healthcare delivery facilities (hospitals).
	Amount of Medicare Disproportionate Share Hospital (DSH) adjustment payments received	HC-DY-240a.2	Not applicable – Medica provides telehealth services, and does not operate US based healthcare delivery facilities (hospitals).
Quality of Care & Patient Satisfaction	Average Hospital Value-Based Purchasing Total Performance Score and domain score, across all facilities	HC-DY-250a.1	Not applicable – Medica provides telehealth services, and does not operate US based healthcare delivery facilities (hospitals).
	Number of Serious Reportable Events (SREs) as defined by the National Quality Forum (NQF)	HC-DY-250a.2	Not applicable – Medica provides telehealth services, and does not operate US based healthcare delivery facilities (hospitals).
	Hospital-Acquired Condition (HAC) Score per hospital	HC-DY-250a.3	Not applicable – Medica provides telehealth services, and does not operate US based healthcare delivery facilities (hospitals).
	Excess readmission ratio per hospital	HC-DY-250a.4	Not applicable – Medica provides telehealth services, and does not operate US based healthcare delivery facilities (hospitals).
	Magnitude of readmissions payment adjustment as part of the Hospital Readmissions Reduction Program (HRRP)	HC-DY-250a.5	Not applicable – Medica provides telehealth services, and does not operate US based healthcare delivery facilities (hospitals).
Management of Controlled Substances	Description of policies and practices to manage the number of prescriptions issued for controlled substances	HC-DY-260a.1	Not applicable – Medica provides telehealth services, and does not operate US based healthcare delivery facilities (hospitals).
	Percentage of controlled substance prescriptions written for which a prescription drug monitoring program (PDMP) database was queried	HC-DY-260a.2	Not applicable – Medica provides telehealth services, and does not operate US based healthcare delivery facilities (hospitals).
Pricing & Billing Transparency	Description of policies or initiatives to ensure that patients are adequately informed about price before undergoing a procedure	HC-DY-270a.1	Not applicable – Medica provides telehealth services, and does not operate US based healthcare delivery facilities (hospitals).

Topic	Accounting Metric	SASB Code	Medica Disclosure 2021
	Discussion of how pricing information for services is made publicly available	HC-DY-270a.2	Not applicable – Medica provides telehealth services, and does not operate US based healthcare delivery facilities (hospitals).
	Number of the entity’s 25 most common services for which pricing information is publicly available, percentage of total services performed (by volume) that these represent	HC-DY-270a.3	Not applicable – Medica provides telehealth services, and does not operate US based healthcare delivery facilities (hospitals).
Employee Health & Safety	(1) Total recordable incident rate (TRIR) and (2) days away, restricted, or transferred (DART) rate	HC-DY-320a.1	(1) 0 (2) 0
Employee Recruitment, Development & Retention	1) Voluntary and (2) involuntary turnover rate for: (a) physicians, (b) non-physician health care practitioners, and (c) all other employees	HC-DY-330a.1	(1) a. 0% b. 0% c. 15.5% (2) a. 0% b. 0% c. 0.61% Calculated using the number of leavers in each category during the period of reporting divided by headcount as at 31 Dec 2021 and multiplied by 100.
	Description of talent recruitment and retention efforts for health care practitioners	HC-DY-330a.2	Please refer to pages 16 to 18 of the ESG section of our 2021 Annual Report , where we detail our progress and impact on talent recruitment and retention, for our employees and sub-contract reporters during 2021. https://medicagroupplc.com/mgp-ara21/

Topic	Accounting Metric	SASB Code	Medica Disclosure 2021
Climate Change Impacts on Human Health & Infrastructure	Description of policies and practices to address: (1) the physical risks due to an increased frequency and intensity of extreme weather events and (2) changes in the morbidity and mortality rates of illnesses and diseases, associated with climate change	HC-DY-450a.1	<p>Medica has risk management policies and processes to capture climate related risk. The Group operate telehealth services with a widely distributed team of staff and sub-contracted radiologists, radiographers and clinical trials readers. Further details on our risk management framework can be found on page 34 of our 2021 Annual Report. Further narrative on our environmental and climate change impact can also be found on pages 19 to 21 of the same report.</p> <p>https://medicagroupplc.com/mgp-ara21/</p>
	Percentage of health care facilities that comply with the Centers for Medicare and Medicaid Services (CMS) Emergency Preparedness Rule	HC-DY-450a.2	Not applicable – Medica provides telehealth services, and does not operate US based healthcare delivery facilities (hospitals).
Fraud & Unnecessary Procedures	Total amount of monetary losses as a result of legal proceedings associated with Medicare and Medicaid fraud under the False Claims Act	HC-DY-510a.1	Not applicable – Medica provides telehealth services, and does not operate US based healthcare delivery facilities (hospitals).
Activity Metrics	Number of (1) facilities and (2) beds, by type	HC-DY-000.A	Not applicable – Medica provides telehealth services, and does not operate US based healthcare delivery facilities (hospitals).
	Number of (1) inpatient admissions and (2) outpatient visits	HC-DY-000.B	Not applicable – Medica provides telehealth services, and does not operate US based healthcare delivery facilities (hospitals).

For additional data and narrative on our ESG performance and impact, **please read the ESG section of our 2021 Annual Report on pages 14 to 22.**

Our 2021 Annual Report can be found on our website at: <https://medicagroupplc.com/mgp-ara21/>

[END OF DOCUMENT]